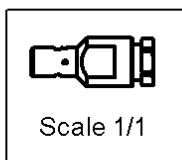
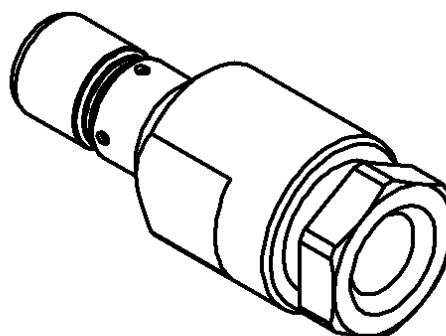
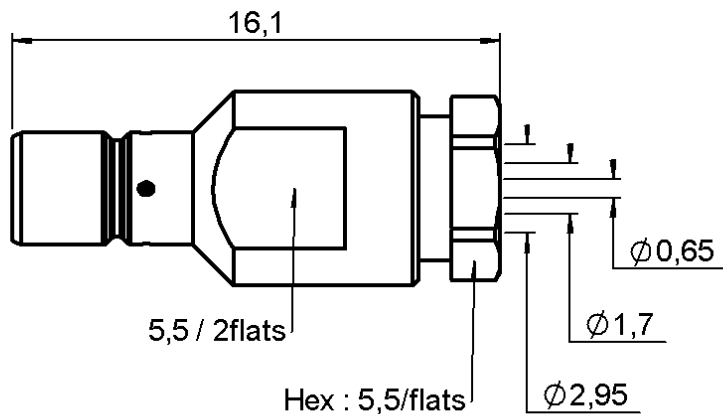


STRAIGHT JACK CLAMP TYPE

R114.205.133

CABLE 2.6/50+75 S

Series : SMB



All dimensions are in mm.



| COMPONENTS | MATERIALS | PLATINGS (µm) |
|----------------|-----------|------------------------|
| BODY | BRASS | GOLD 0.2 OVER NICKEL 2 |
| CENTER CONTACT | BRASS | GOLD 1.3 OVER NICKEL 2 |
| OUTER CONTACT | - | - |
| INSULATOR | PTFE | - |
| GASKET | - | - |
| OTHERS PARTS | BRASS | GOLD 0.2 OVER NICKEL 2 |
| - | - | - |
| - | - | - |

Issue : 0216 B

In the effort to improve our products, we reserve the right to make changes judged to be necessary.



STRAIGHT JACK CLAMP TYPE

R114.205.133

CABLE 2.6/50+75 S

Series : SMB

PACKAGING

| Standard | Unit | Other |
|------------|-------------------|-------------------|
| 100 | 'W' option | Contact us |

SPECIFICATION

ELECTRICAL CHARACTERISTICS

| | | |
|---------------------------------|---------------|-----------------------------|
| Impedance | | 50 Ω |
| Frequency | | 0-4 GHz |
| VSWR | 1.25 + | 0.040 x F(GHz) Maxi |
| Insertion loss | | 0.25 √F(GHz) dB Maxi |
| RF leakage | - (| 57 - F(GHz)) dB mini |
| Voltage rating | | 335 Veff Maxi |
| Dielectric withstanding voltage | | 1000 Veff mini |
| Insulation resistance | | 1000 MΩ mini |

CABLE ASSEMBLY

| Stripping | a | b | c | d | e | f |
|-----------|------|------|------|------|------|------|
| mm | 2.00 | 1.00 | 4.00 | 3.18 | 2.00 | 0.00 |

Assembly instruction :

Recommended cable(s)

RG 316
RG 188
RG 179
RG 187
KX 22A

MECHANICAL CHARACTERISTICS

| | | |
|----------------------------|--|---------------------|
| Center contact retention | | |
| Axial force – Mating end | | 10 N mini |
| Axial force – Opposite end | | 10 N mini |
| Torque | | NA N.cm mini |

Cable retention

- pull off **110** N mini
- torque **NA** N.cm

TOOLING

| Part Number | Description | Hexagon |
|--------------|-----------------------------|---------|
| . | . | . |
| R282.317.010 | TORQUEMETER WRENCH5.5 MM | 5.5 |

| | | |
|--------------------|--|-----------------|
| Recommended torque | | |
| Mating | | NA N.cm |
| Panel nut | | NA N.cm |
| Clamp nut | | 63 N.cm |
| A/F clamp nut | | 5.500 mm |

OTHERS CHARACTERISTICS

| | | |
|-------------|--|------------------------|
| Mating life | | 500 Cycles mini |
| Weight | | 2.120 g |

ENVIRONMENTAL

| | | |
|-----------------------|--|---------------------|
| Operating temperature | | -65/+165 °C |
| Hermetic seal | | NA Atm.cm3/s |
| Panel leakage | | NA |

Issue : 0216 B

In the effort to improve our products, we reserve the right to make changes judged to be necessary.



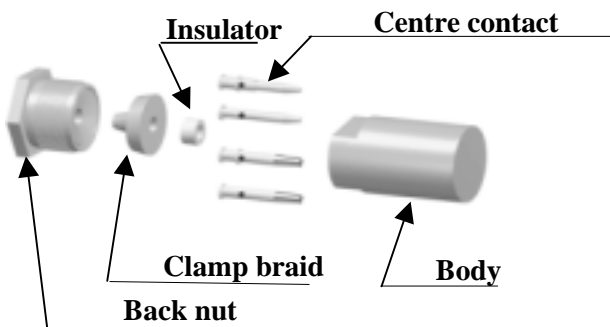
STRAIGHT JACK CLAMP TYPE

R114.205.133

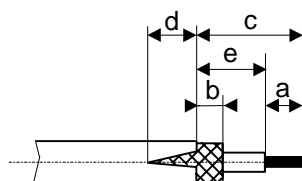
CABLE 2.6/50+75 S

Series : SMB

COMPONENTS

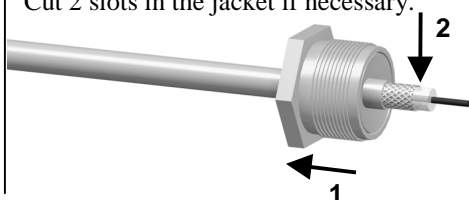


STRIPPING DIMENSIONS



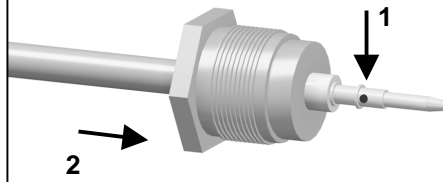
1

Slide the back nut onto the cable.
Strip the cable.
Cut 2 slots in the jacket if necessary.



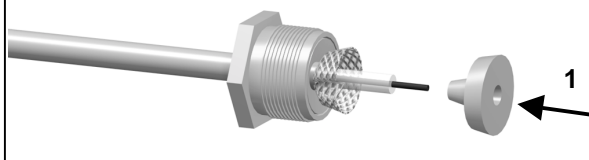
4

Solder the centre contact onto the inner conductor.
Slide the back nut over the cable assembly.



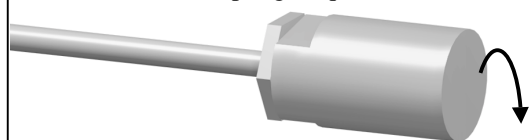
2

Slide the clamp braid sleeve between the cable dielectric and the braid.



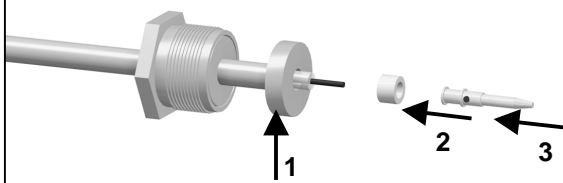
5

Screw sub-assembly into the connector body with the adapted wrench.
Recommended coupling torque (see connector TDS).



3

Cut the braid flush with the clamp braid sleeve.
Slide the spacer onto the cable.
Slide the centre contact on until it bottoms against the cable dielectric.



Issue : 0216 B

In the effort to improve our products, we reserve the right to make changes judged to be necessary.

